



INTRODUCTION TO THE CALGARY REGIONAL PARTNERSHIP

The Calgary Regional Partnership represents a diverse group of eighteen municipalities and one First Nation in the Calgary Area. The Partnership is an incorporated not-for-profit company that applies “thinking regionally and acting locally” to regional projects.

VISION:

We are **working together** to live in **balance** with a **healthy environment**, in **enriched communities**, with **sustainable infrastructure** and a **prosperous economy**.

MISSION:

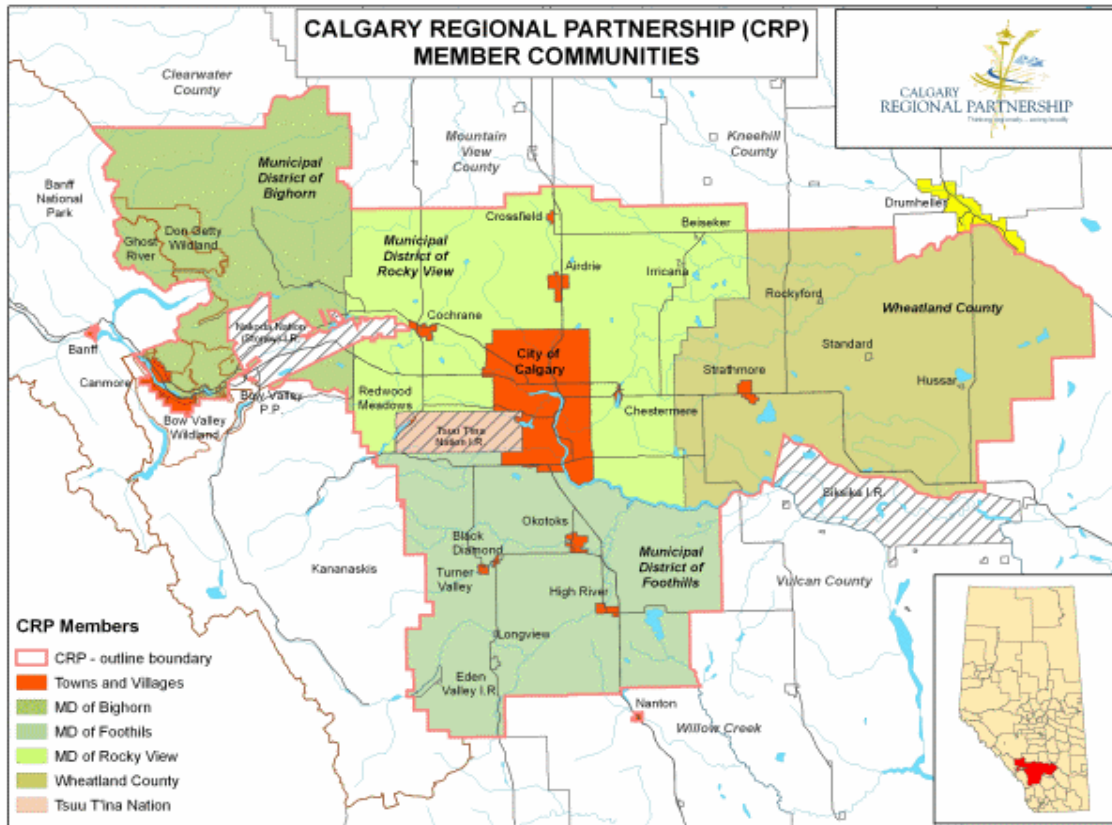
Community owned and regionally inspired, the Calgary Regional Partnership shapes and champions a regional vision. We **invent, incubate and work together** to achieve a healthy environment, enriched communities, sustainable infrastructure and a prosperous economy.

PROJECTS:

Here are our priority initiatives:

- **Regional Land Use Planning** provides guidance to regional growth, land use, economic development, transportation, municipal servicing, and the environment, over the next 30 - 50 years. This project – at least its first phase will be completed in time for the January 2009 General Assembly. The plan will have three key elements:
 - a defensive or conservation strategy (Where and what must we protect),
 - an offensive or development strategy (Where the next 1.5 million residents will go), and
 - governance strategy (How will we implement the plan)
- **Regional Water-Wastewater Servicing Study**, The plan is expected to ultimately create integrated and sustainable water and wastewater infrastructure while fostering thoughtful, well planned development in the face of limited water supply. This project is being integrated with the regional land use planning project with a next phase of more detailed engineering and planning work in the sub regions soon to be underway.
- **Economic Development** - marketing and developing the region as a region through coordinated and strategic projects in cooperation with each of the CRP members is proving to be a critical component of CRP’s vision and mission. A sustainable opportunity identification study has been completed and regional marketing will be targeted and based on the final results of this study.
- A new regional support system for **Specialized Transportation** of our aging and disabled residents has been incubated. This program will be rolling out over the next few months and will help fill gaps in the current mix of specialized transportation services and enhance the efforts of local providers of transportation services to help residents age in place and continue to contribute to their communities.

- **GIS regional mapping** – This project is expected to create new mapping tools to help municipal decision makers better understand the fiscal, environmental and social impacts of recommendations put forward before them at the local and regional level. The project is working through the creation of regional GIS data.
- **Regional Composting** – this project will ultimately turn 50% of the region’s waste stream going into our landfill into a valued resource - compost. The final implementation plans will be presented to the December General Assembly.



OUR MEMBERS

City of Airdrie, City of Calgary, Town of Banff, Town of Black Diamond, Town of Canmore, Town of Chestermere, Town of Cochrane, Town of Crossfield, Town of High River, Town of Nanton, Town of Okotoks, Town of Strathmore, Town of Turner Valley, Municipal District of Big Horn, Municipal District of Foothills, Municipal District of Rocky View, Townsite of Redwood Meadows, Tsuu T’ina Nation, and Wheatland County

For more information on The Calgary Regional Partnership and the latest on the above projects, please visit www.calgaryregion.ca or e-mail rick@calgaryregion.ca.