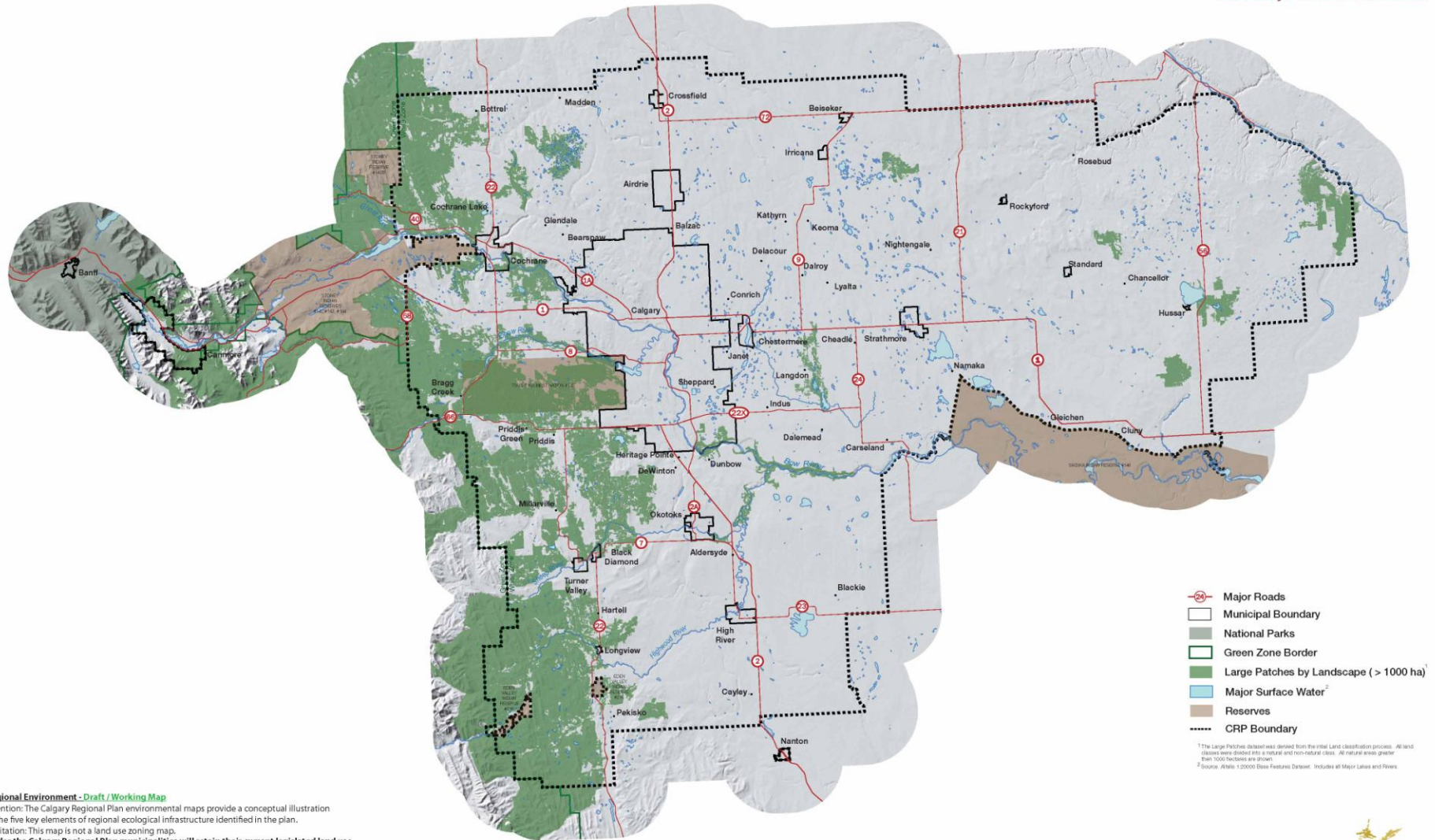


Calgary Regional Plan

Regional Environment - Draft / Working Map

Large Patches by Landscape

Tuesday, March 3, 2009



- Major Roads
- Municipal Boundary
- National Parks
- Green Zone Border
- Large Patches by Landscape (> 1000 ha)¹
- Major Surface Water²
- Reserves
- CRP Boundary

¹ The Large Patches database was derived from the 1994 Land Classification process. All land classes were divided into 4 natural and non-natural class. All natural areas greater than 1000 hectares are shown.
² Source: Atlas 1:20000 Base Features Dataset. Includes all Major Lakes and Rivers.

Regional Environment - Draft / Working Map
 Intention: The Calgary Regional Plan environmental maps provide a conceptual illustration of the five key elements of regional ecological infrastructure identified in the plan.
 Limitation: This map is not a land use zoning map.
 Under the Calgary Regional Plan municipalities will retain their current legislated land use planning and decision-making authority to define and choose the most appropriate implementation actions to achieve plan policy directions in their local context.

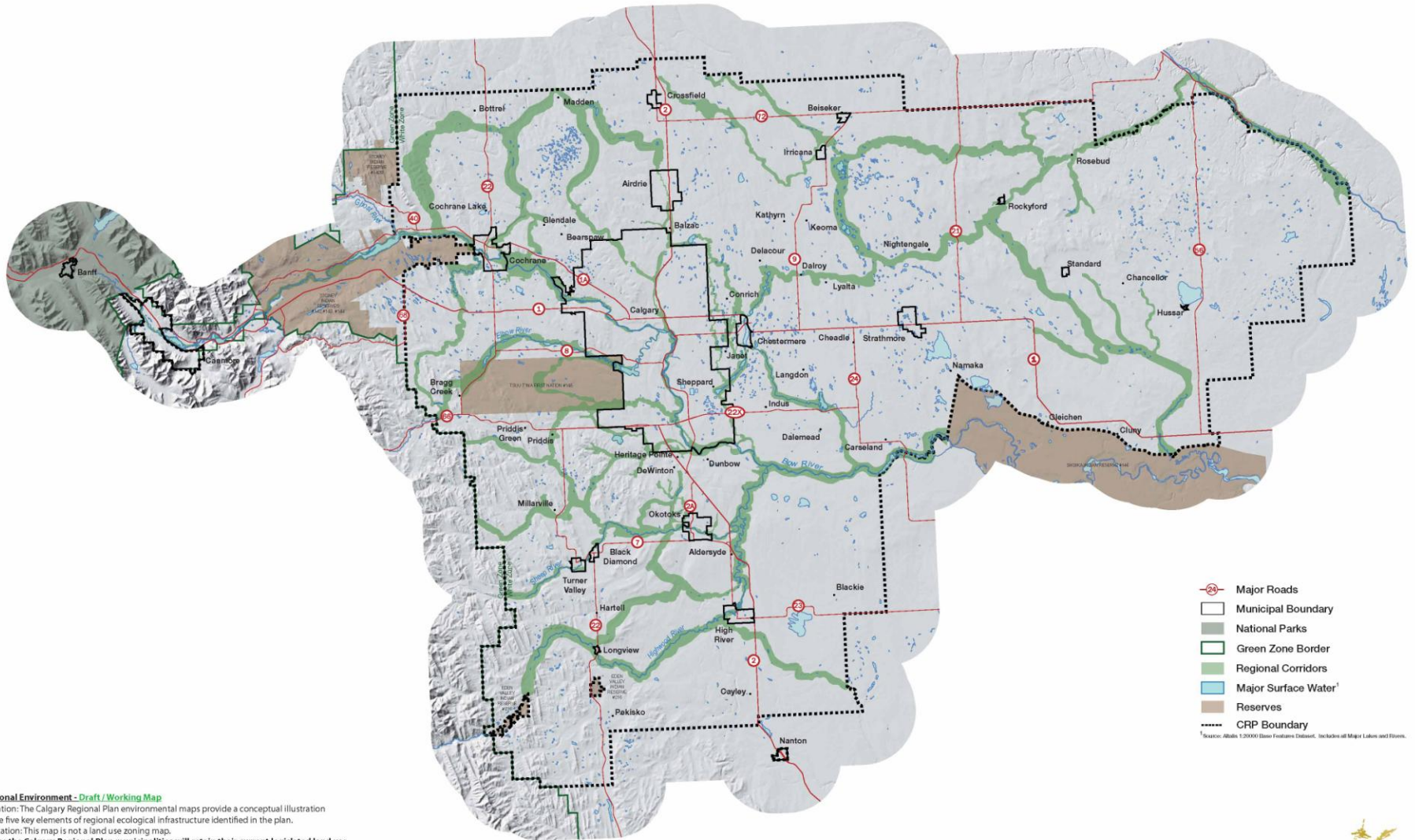


Calgary Regional Plan

Regional Environment - Draft / Working Map

Regional Corridors

Tuesday, March 3, 2009



Regional Environment - Draft / Working Map

Intention: The Calgary Regional Plan environmental maps provide a conceptual illustration of the five key elements of regional ecological infrastructure identified in the plan.

Limitation: This map is not a land use zoning map.

Under the Calgary Regional Plan municipalities will retain their current legislated land use planning and decision-making authority to define and choose the most appropriate implementation actions to achieve plan policy directions in their local context.

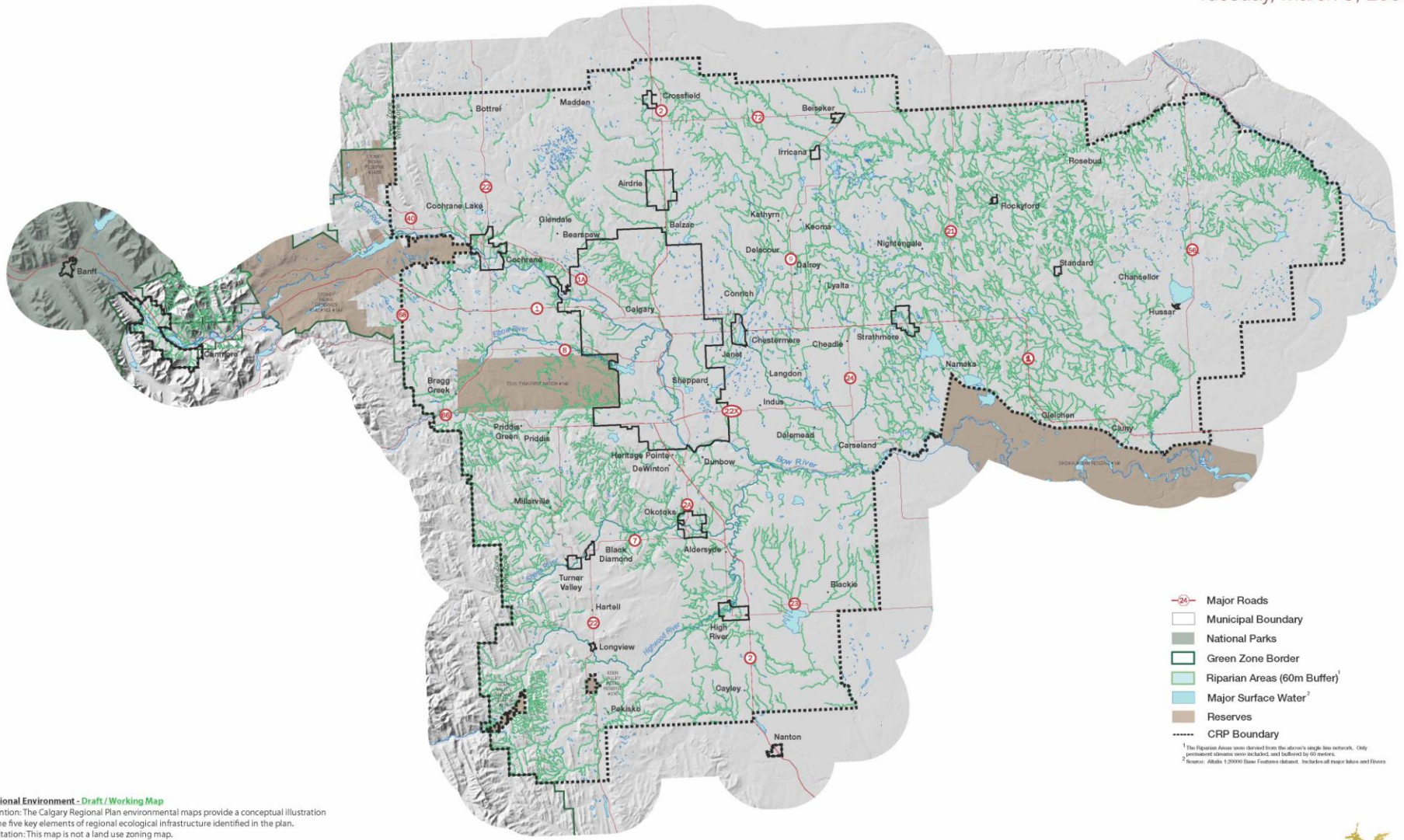


Calgary Regional Plan

Regional Environment - Draft / Working Map

Riparian Areas

Tuesday, March 3, 2009



- Major Roads
- Municipal Boundary
- National Parks
- Green Zone Border
- Riparian Areas (60m Buffer)¹
- Major Surface Water²
- Reserves
- CRP Boundary

¹ The Riparian Areas were derived from the above's single line network. Only permanent streams were included, and buffered by 60 meters.
² Source: Atlas 1:50000 Base Features dataset. Includes all major lakes and flows.

Regional Environment - Draft / Working Map
 Intention: The Calgary Regional Plan environmental maps provide a conceptual illustration of the five key elements of regional ecological infrastructure identified in the plan.
 Limitation: This map is not a land use zoning map.
 Under the Calgary Regional Plan municipalities will retain their current legislated land use planning and decision-making authority to define and choose the most appropriate implementation actions to achieve plan policy directions in their local context.

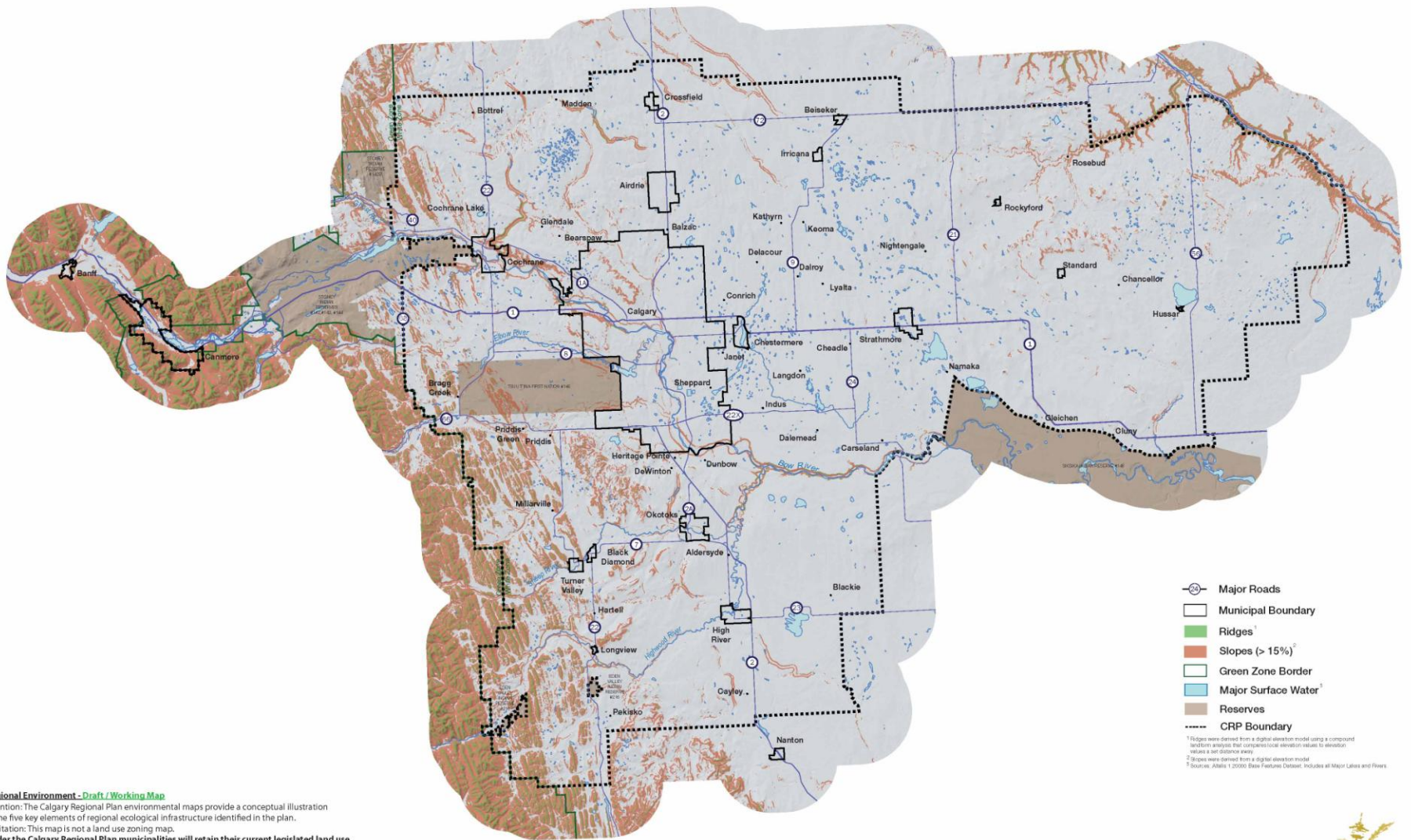


Calgary Regional Plan

Regional Environment - Draft / Working Map

Slopes and Ridges

Tuesday, March 3, 2009



- Major Roads
- Municipal Boundary
- Ridges
- Slopes (> 15%)¹
- Green Zone Border
- Major Surface Water¹
- Reserves
- CRP Boundary

¹ Slopes were derived from a digital elevation model using a compound landform analysis that compares local elevation values to elevation values a set distance away.
² Slopes were derived from a digital elevation model.
³ Source: Alberta 1:20000 Base Features Dataset. Includes all Major Lakes and Rivers.

Regional Environment - Draft / Working Map

Intention: The Calgary Regional Plan environmental maps provide a conceptual illustration of the five key elements of regional ecological infrastructure identified in the plan.

Limitation: This map is not a land use zoning map.

Under the Calgary Regional Plan municipalities will retain their current legislated land use planning and decision-making authority to define and choose the most appropriate implementation actions to achieve plan policy directions in their local context.

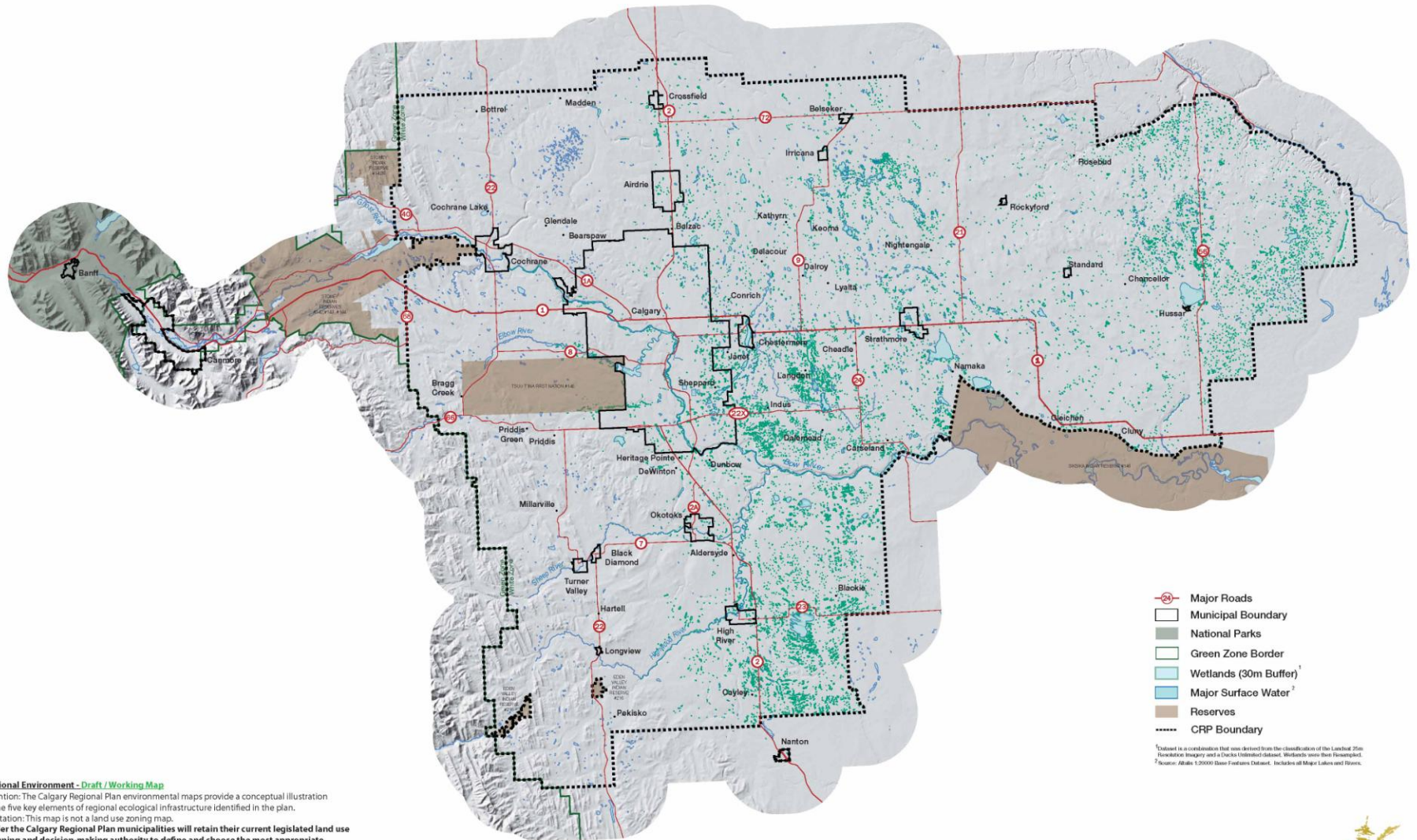


Calgary Regional Plan

Regional Environment - Draft / Working Map

Wetlands

Tuesday, March 3, 2009



Regional Environment - Draft / Working Map

Intention: The Calgary Regional Plan environmental maps provide a conceptual illustration of the five key elements of regional ecological infrastructure identified in the plan.

Limitation: This map is not a land use zoning map.

Under the Calgary Regional Plan municipalities will retain their current legislated land use planning and decision-making authority to define and choose the most appropriate implementation actions to achieve plan policy directions in their local context.

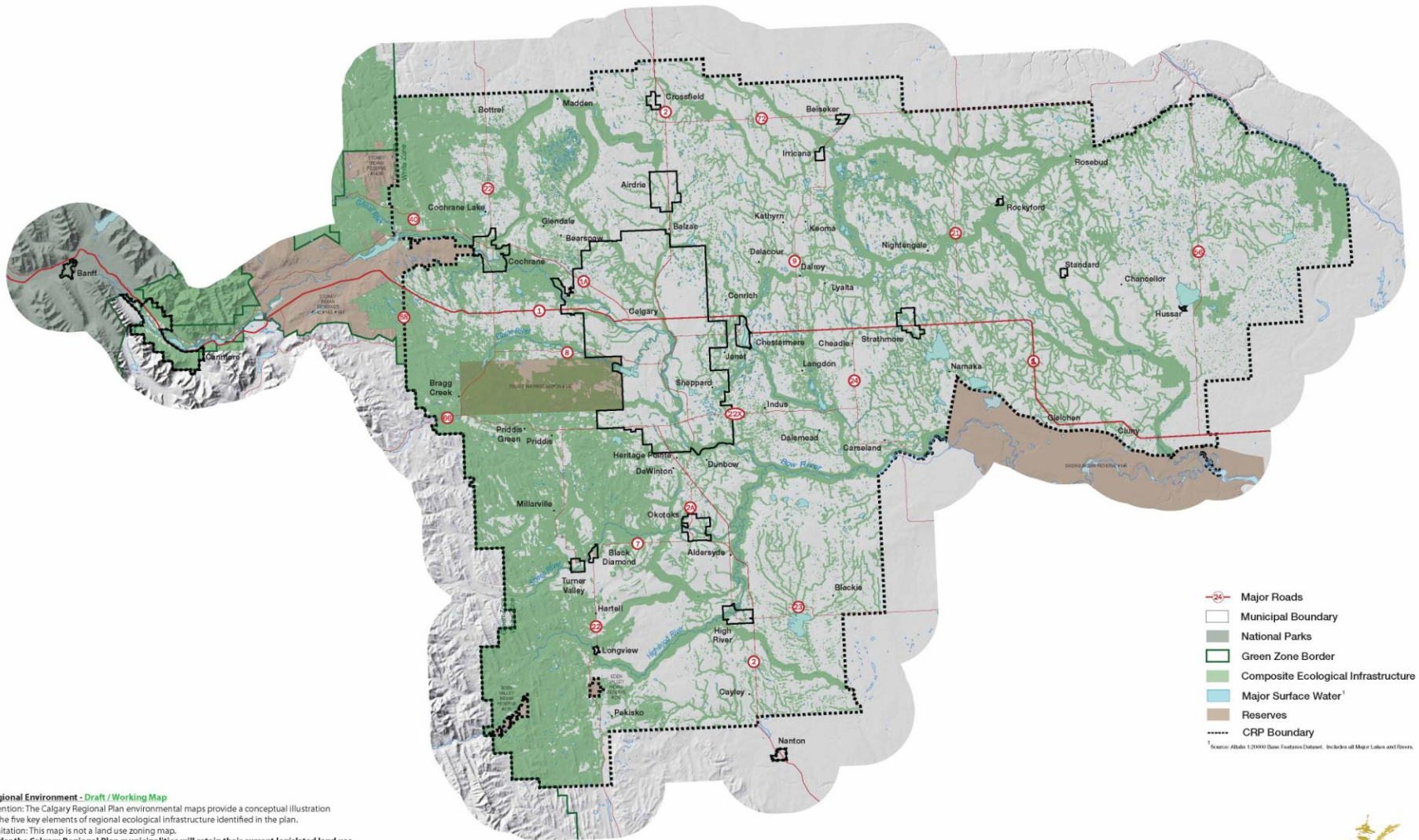


Calgary Regional Plan

Regional Environment - Draft / Working Map

Composite Ecological Infrastructure

Tuesday, March 3, 2009



- Major Roads
- Municipal Boundary
- National Parks
- Green Zone Border
- Composite Ecological Infrastructure
- Major Surface Water¹
- Reserves
- CRP Boundary

¹ Source: Atlas 1:30000 Base Features Dataset. Includes of Major Lakes and Rivers.

Regional Environment - Draft / Working Map
 Intention: The Calgary Regional Plan environmental maps provide a conceptual illustration of the five key elements of regional ecological infrastructure identified in the plan.
 Limitation: This map is not a land use zoning map.
 Under the Calgary Regional Plan municipalities will retain their current legislated land use planning and decision-making authority to define and choose the most appropriate implementation actions to achieve plan policy directions in their local context.

